

Coastal Marine Area (CMA) Is,
Unless Otherwise Zoned,
All Areas Below Assumed
MHWS (See Legend)

Waimea Estuary

Tōhuanui Beach

CR7

SFB

SFB

BEACH RD

CR7

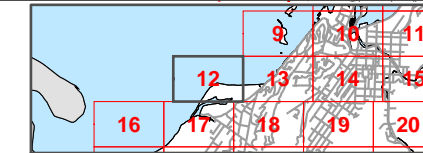
CGZ



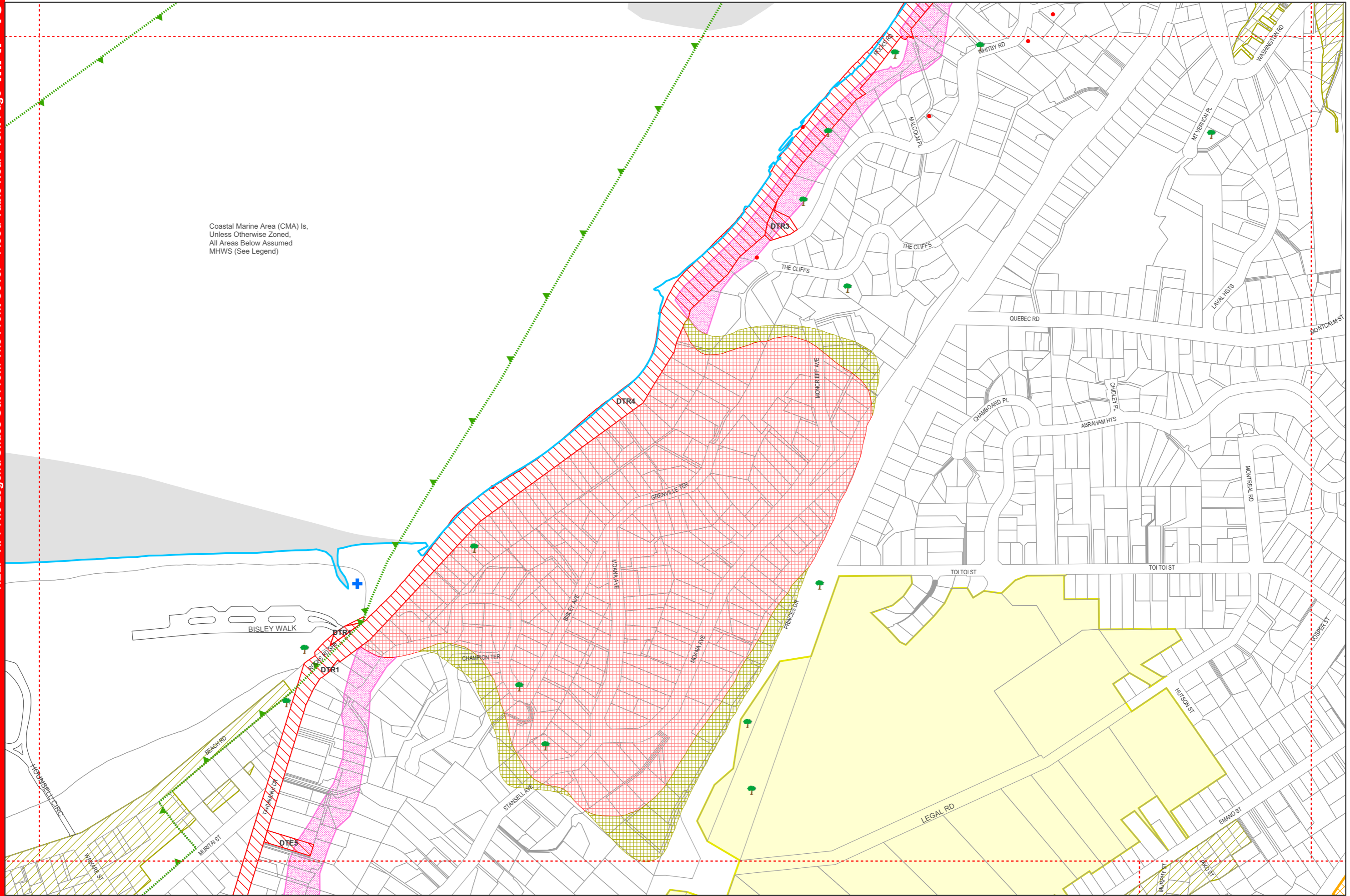
OPERATIVE IN PART (EXCLUDING REGIONAL COASTAL PLAN)
1 SEPTEMBER 2004

NELSON RESOURCE MANAGEMENT PLAN

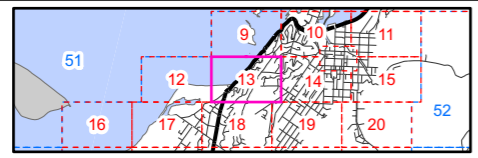
Maps Generated by Nelson City Council's GIS System
This Publication is Copyright Reserved by Nelson City Council - Cadastral Information derived from the Crown Records System.
CROWN COPYRIGHT RESERVED - Approved for internal reproduction by Nelson City Council



1:5,000
MAP 12



1:5,000
MAP 13

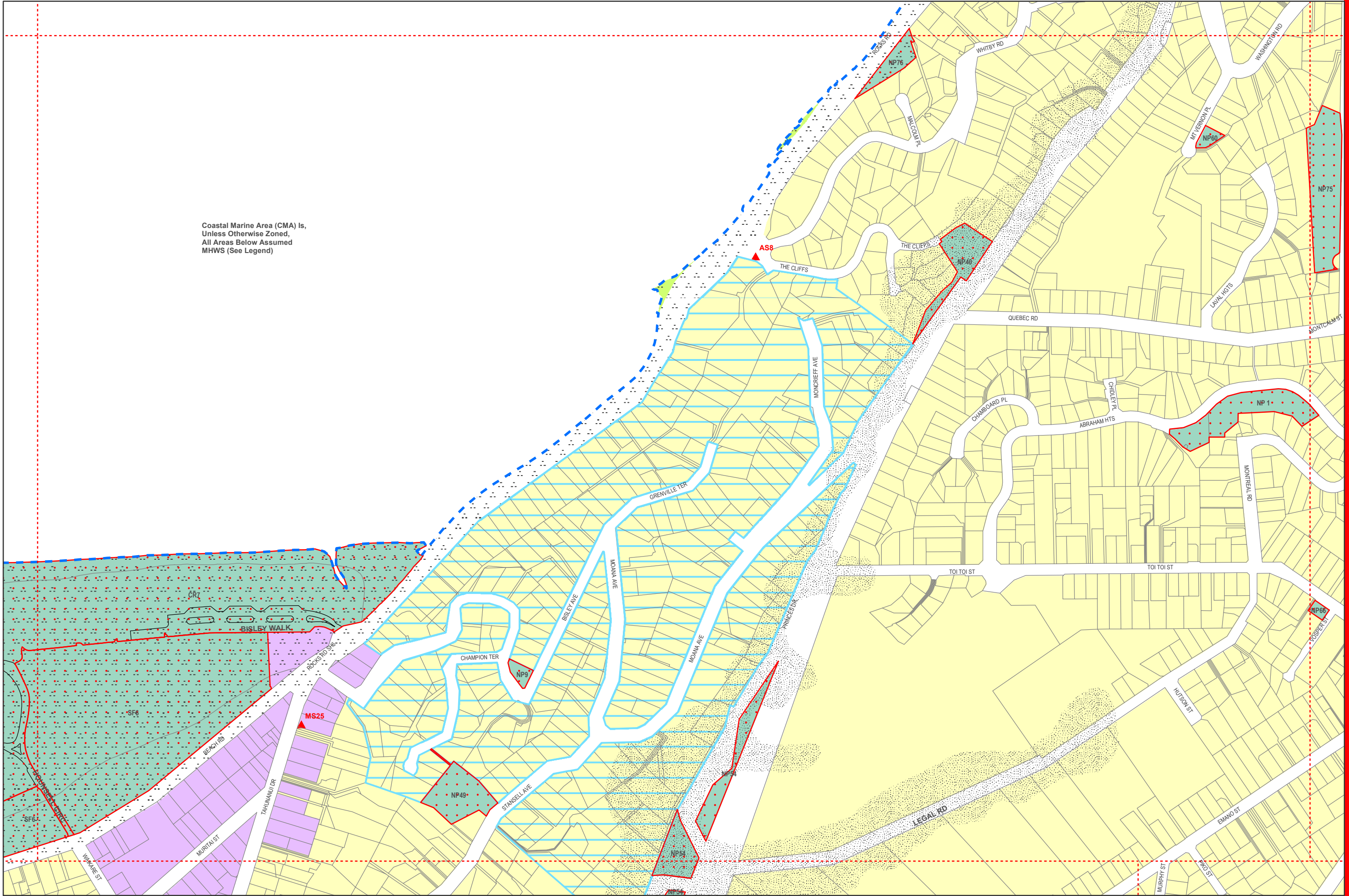


Maps Generated by Nelson City Council's GIS System
This Publication is Copyright Reserved by Nelson City Council - Cadastral Information derived from the Crown Records System.
CROWN COPYRIGHT RESERVED - Approved for internal reproduction by Nelson City Council

15 JUNE 2009



NELSON RESOURCE MANAGEMENT PLAN



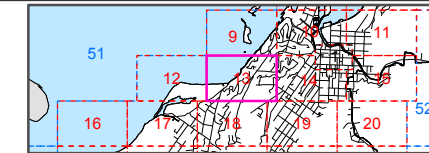
Coastal Marine Area (CMA) is,
Unless Otherwise Zoned,
All Areas Below Assumed
MHWS (See Legend)

26 JANUARY 2008

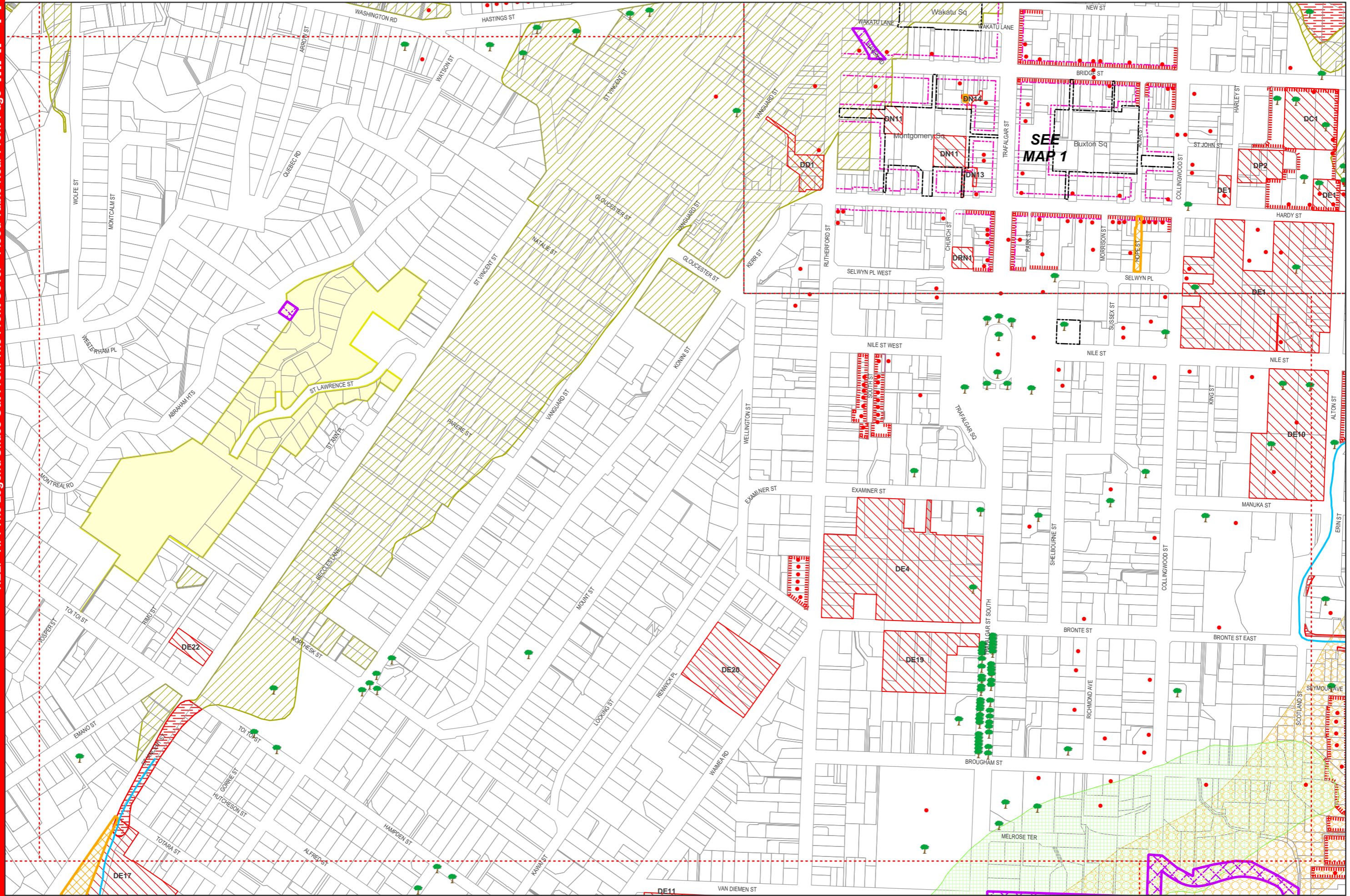
NELSON CITY COUNCIL

NELSON RESOURCE MANAGEMENT PLAN

Maps Generated by Nelson City Council's GIS System
This Publication is Copyright Reserved by Nelson City Council - Cadastral Information derived from the Crown Records System.
CROWN COPYRIGHT RESERVED - Approved for internal reproduction by Nelson City Council

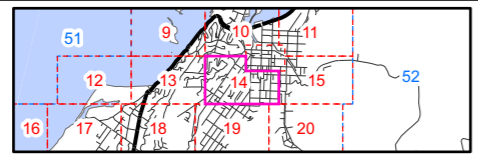


1:5,000
MAP 13



SEE
MAP 1

1:5,000
MAP 14



Maps Generated by Nelson City Council's GIS System
This Publication is Copyright Reserved by Nelson City Council - Cadastral Information derived from the Crown Records System.
CROWN COPYRIGHT RESERVED - Approved for internal reproduction by Nelson City Council

15 JUNE 2009



NELSON RESOURCE MANAGEMENT PLAN